

CLIMATE POLLUTION REDUCTION GRANTS

NOTE: This meeting will be recorded





AGENDA

Sarasota and Manatee County Region Greenhouse Gas Reduction Plan

*Climate Pollution Reduction Grant
(CPRG)*

- [1] **Introduction** (5-min)
- [2] **Overview of CPRG Planning Grant**
(5-min)
- [3] **Moderated Discussion** (50-min)
 - *Transportation, Solid Waste*
 - *Commercial & Residential*
- [4] **Questions** (10-min)



INTRODUCTIONS



SARA KANE
Project Manager



ALIA GARRETT
Community Engagement



CATHERINE PRINCE
Project Manager



DAREN CHEATHAM
Community Engagement



FABIAN CAMPOS
Justice 40 Support



BAKAI RUSLANBEK UULU
Low Income and Disadvantage
Communities Benefits Analysis





Please introduce yourselves

Name & Organization



CPRG Planning Grant

- Sarasota County is managing a \$1 million EPA “Climate Pollution Reduction Planning Grant” (CPRG) funded via a formula award under the Inflation Reduction Act (IRA).
- The grant will cover the full geographic extent of Sarasota and Manatee counties.
- The plan will be developed in two phases per EPA requirements:
 - » **Priority Climate Action Plan (PCAP)** – complete by March 2024
 - » **Comprehensive Climate Action Plan (CCAP)** – complete by Fall 2025





Why We Need Your Input.

Your input will help us prioritize ‘Clean Air’ programs and investment in the region.

The Climate Action Plan (PCAP, CCAP) will position Sarasota and Manatee counties to compete for implementation funding.

For example: The region will be eligible to apply for the EPA CPRG Implementation Grants with awards totaling \$4.6B (applications due April 2024).



Air Pollution



Air pollution is contamination of the indoor or outdoor environment .. that modifies the natural characteristics of the atmosphere.

Common sources of air pollution are:

- » Household combustion devices,
- » motor vehicles,
- » industrial facilities, and
- » forest fires.



ZOOM polling

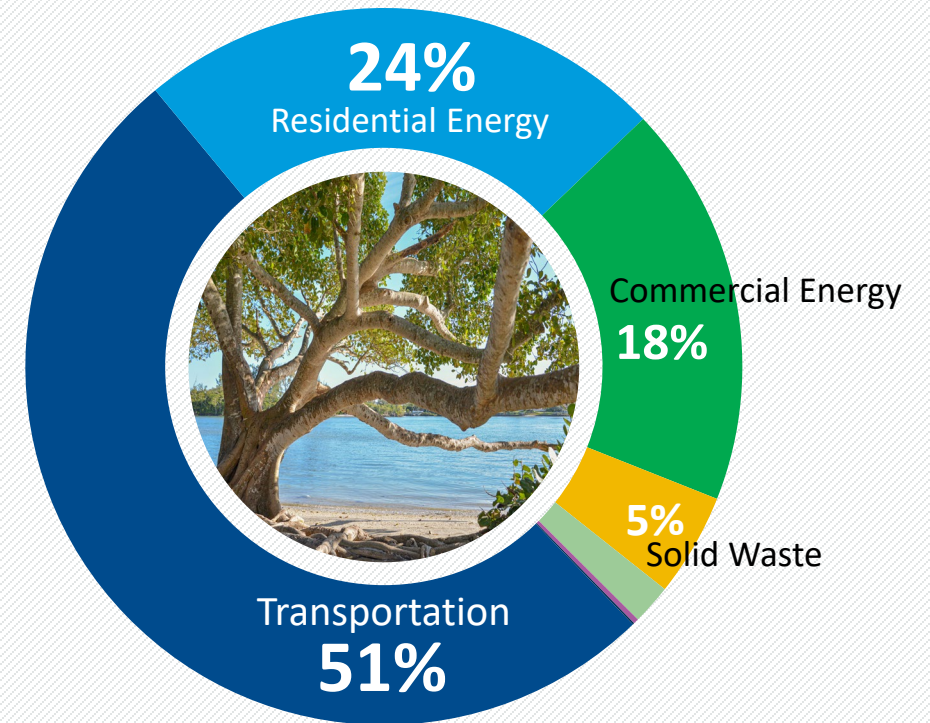
What are the Highest Air Pollutants in the Region?

- Residential Buildings
- Commercial Buildings
- Industry
- Transportation
- Waste Management
- Others



Air Pollution in the Region

- **Transportation – 51%**
 - » On-road vehicles like cars, trucks, buses
 - » Off-road vehicles like construction equipment, marine, rail
- **Residential & Commercial Energy – 42%**
 - » Electricity, and natural gas
- **Solid Waste – 5%**
 - » Landfill emissions, flaring





Air Pollution Impacts



Ambient (outdoor) air pollution in both cities and rural areas is causing fine particulate matter which result in strokes, heart diseases, lung cancer, acute and chronic respiratory diseases.

The combined effects of ambient air pollution and household air pollution is associated with 7 million premature deaths, worldwide annually.

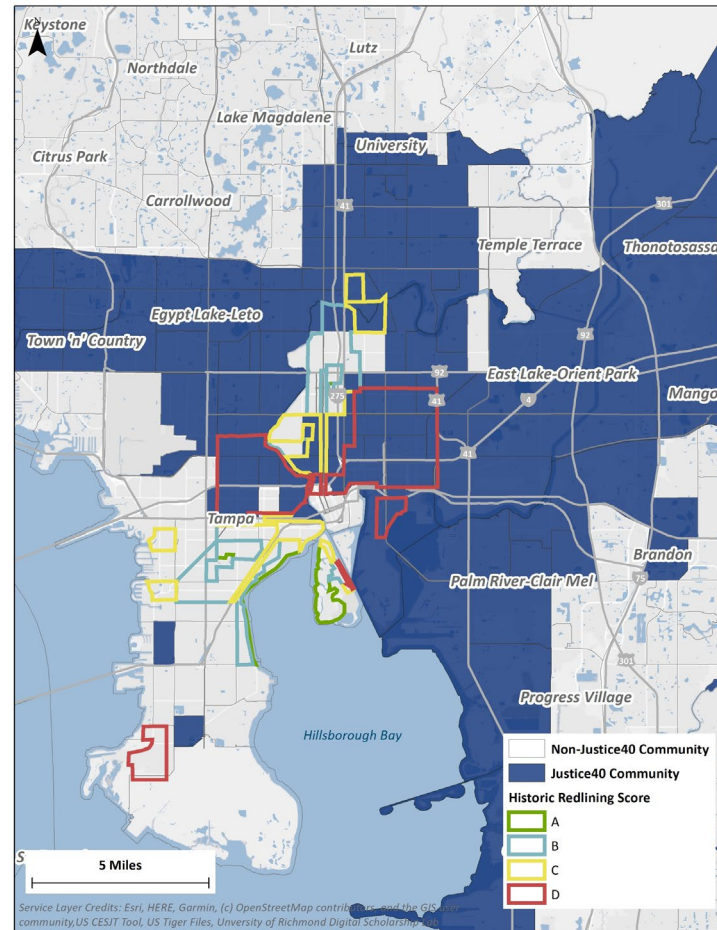
But, low-income and historically disadvantaged communities bear disproportionate burden.



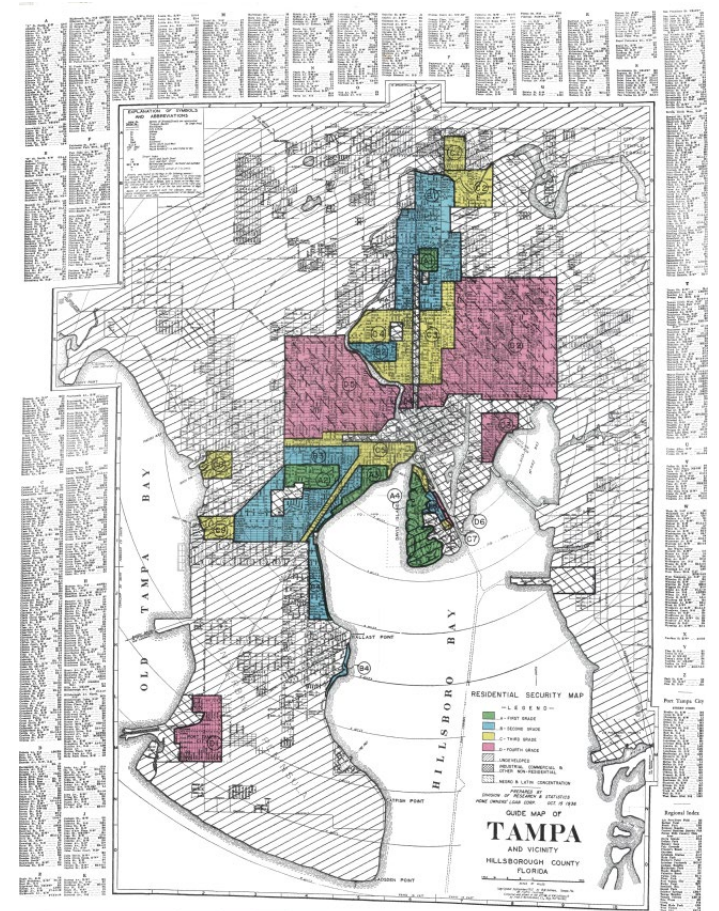
Climate Pollution & Low-Income Disadvantaged Communities

Redlining refers to the practice of denying services, particularly banking and mortgage services, to neighborhoods, sometimes by literally drawing a red line on a map.

Historically red-lined areas tend to have lower public investment in tree canopy, number of parks and open spaces. Sometimes industrial use are located beside residential, causing **long-term health consequences to the residents.**



Year 2024. Current Conditions
Justice40 Communities and Historic Redlining Score in Tampa Bay



Year 1932 Zoning. Past Practices
Source: <https://dsl.richmond.edu/panorama/redlining/map/FL/Tampa/areas#loc=12/27.7878/-82.644>



Why it Matters in the Region...



21%
of region's
population live in
a disadvantaged
census tract*



1 in 5
adults in
disadvantaged census
tracts* have a heart
disease or asthma;



\$47,314
median household
income

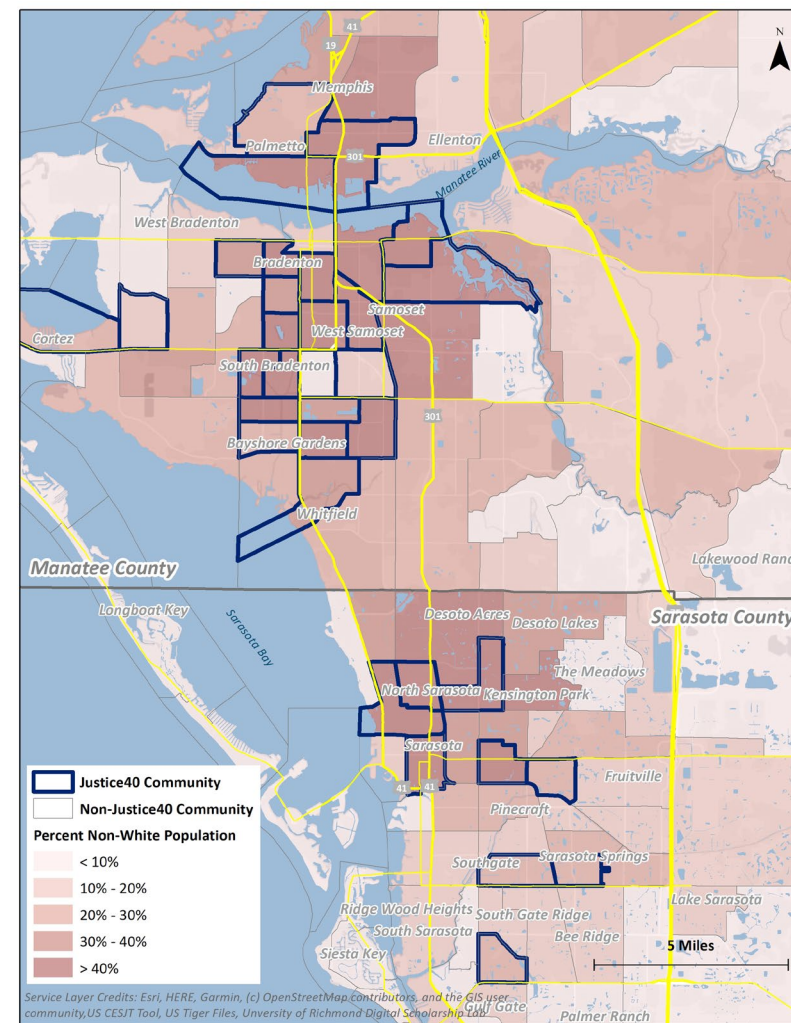


26%
of households
spend more than
half of their gross
income on rent



1 in 3
adults in
disadvantaged census
tracts* have diabetes

\$197,921
median home
value



*Note: based on definitions from Climate and Economic Justice Screening Tool (CEJST)



What Can The Region Invest In?



Transportation Electrification



Solid Waste Management

Food Waste Reduction



Goal #1

REDUCE THE AMOUNT OF FOOD WASTE GENERATED

An estimated 25-40% of food grown, processed and transported in the U.S. will never be consumed.



Goal #2

DONATE MORE SAFE, NUTRITIOUS FOOD TO PEOPLE IN NEED

Some generated food waste is safe to eat, and can be donated to food banks and anti-hunger organizations, providing nutrition to those in need.



Goal #3

RECYCLE UNAVOIDABLE FOOD WASTE, DIVERTING IT FROM LANDFILLS

For food waste, a landfill is the end of the line; but when composted, it can be recycled into soil or energy.

Source: <https://www.foodwastealliance.org/>



What Can The Region Invest In?



Renewable Energy



Energy Efficiency



- **Light bulbs:** An LED light bulb that has earned the ENERGY STAR label uses up to 90% less energy than an incandescent light bulb, while providing the same illumination.
- **Windows:** Energy-efficient windows are made with materials that reduce heat exchange and air leaks, which means you don't need as much energy to heat or cool a space.
- **Insulation:** Adding more insulation to an attic keeps the warm air inside from escaping in the winter. In the summer, it keeps hot air out. With good insulation, you won't need to use as much energy to keep your house warm in the winter or cool in the summer.
- **Smart thermostats:** Smart thermostats are Wi-Fi enabled devices that control heating and cooling in your home by learning your temperature preferences and schedule to automatically adjust to energy-saving temperatures when you are asleep or away. They can help you lower your energy bills by not spending money to heat or cool an empty house.



BREAKOUT DISCUSSION

No recording



Next Steps



Questions?

Sign up for project updates at www.SCMC-PollutionReduction.com